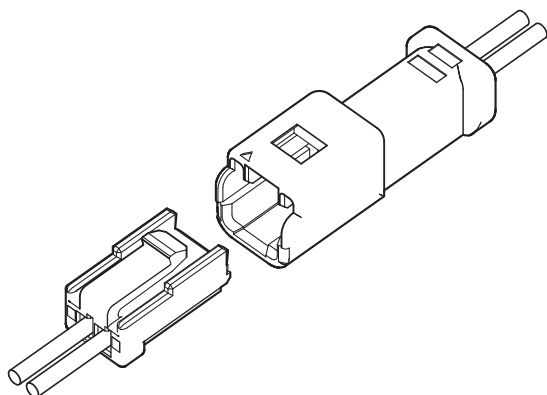


# ZOM CONNECTOR

1.5 mm pitch/Wire-to-Wire connectors/Crimp style and Mating style



This is a small-sized, wire-to-wire, single row connector at 1.5mm pitch. It is not only compact for applications with limited space, but also provides a clear mating and locking sensation upon connecting the plug and receptacle.

In addition, the ZOM series comes with low-insertion force contacts which can improve operability when mating and unmating the connector.

- Compact and space-saving
- Clear mating and locking sensation
- Secure lock mechanism (Inner lock)
- Smooth insertion/withdrawal operability (low insertion force contacts)
- Keying options could be offered upon request

## Specifications

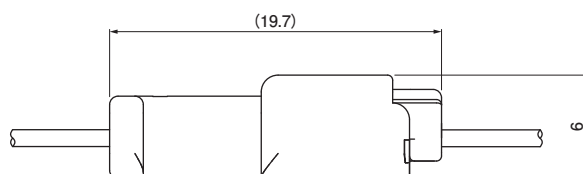
- Current rating: 2 A AC/DC (AWG #24)
- Voltage rating: 100 V AC/DC
- Temperature range: -25°C to +85°C  
(including temperature rise in applying electrical current)
- Contact resistance:
  - Initial value/ 15 mΩ max.
  - After environmental tests/ 25 mΩ max.
- Insulation resistance: 500 MΩ min.
- Withstanding voltage:
  - There shall be no breakdown or flashover while applying 500 VAC for one minute.
- Applicable wire range:
  - Conductor size/ AWG #28 to AWG #24
  - Insulation O.D./  $\phi$ 0.76 mm to  $\phi$ 1.3 mm
- \* Please refer to the "Handling Precautions for Terminals and Connectors" on our website (listed in the "Technical Documents" column on the Product Information page) before use.
- \* RoHS2 compliance
- \* Dimensional unit: mm
- \* Contact JST for details.

## Standards

For information on overseas standard registrations, please refer to the "List of Registered Overseas Standards" on our website (listed in the "Technical Documents" column on the Product Information page).

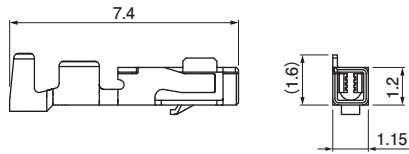
\* Specifications registered to overseas standards may differ from the general specifications listed above.

## Assembly layout

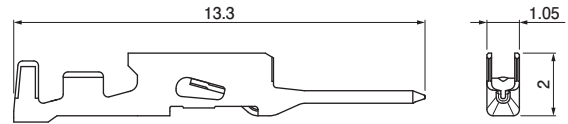


## Contact

### Socket contact



### Pin contact



### Socket contact

Model No.	Applicable wire range		Q'ty/ reel
	Conductor size	AWG (mm <sup>2</sup> )	Insulation O.D. (mm)
SZND-002T-P0.5	#28 to #24	(0.08 to 0.21)	0.76 to 1.3

Material and Surface finish, etc.

Copper alloy, tin-plated

### Pin contact

Model No.	Applicable wire range		Q'ty/ reel
	Conductor size	AWG (mm <sup>2</sup> )	Insulation O.D. (mm)
SZNDM-002T-P0.5	#28 to #24	(0.08 to 0.21)	0.76 to 1.3

Material and Surface finish, etc.

Copper alloy, tin-plated

### Crimping machine

Contact	Crimping machine	Applicator	Crimp applicator with dies
SZND-002T-P0.5	AP-K2N	MKS-L	APLMK SZND/M002-05

Note: Contact JST for fully automatic crimping applicator.

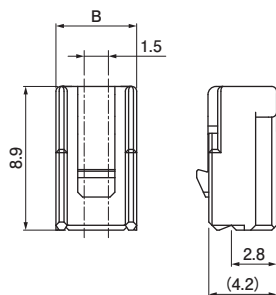
### Crimping machine

Contact	Crimping machine	Applicator	Crimp applicator with dies
SZNDM-002T-P0.5	AP-K2N	MKS-L	APLMK SZND/M002-05

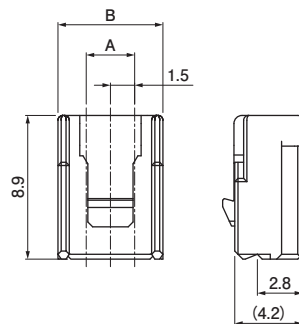
Note: Contact JST for fully automatic crimping applicator.

## Plug housing (For socket contact)

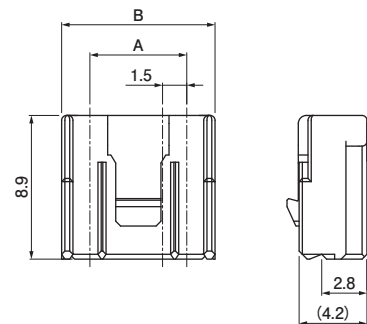
### <2 circuits>



### <3 circuits>



### <4, 5 circuits>



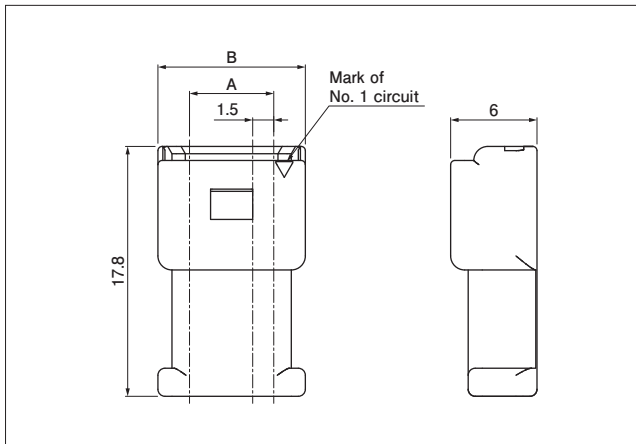
No. of circuits	Model No.	Dimensions (mm)		Q'ty/bag
		A	B	
2	ZOMP-02V-A-S	—	5.0	3,000
3	ZOMP-03V-A-S	3.0	6.5	3,000
4	ZOMP-04V-A-S	4.5	8.0	3,000
5	ZOMP-05V-A-S	6.0	9.5	3,000

Material and Surface finish, etc.

PBT, natural

Note: For flame retardant grade of resin material used, please refer to the "List of Registered Overseas Standards" on our website (listed in the "Technical Documents" column on the Product Information page).

## Receptacle housing (For pin contact)



No. of circuits	Model No.	Dimensions (mm)		Q'ty/bag
		A	B	
2	ZOMR-02VF-A-S	—	6.0	1,000
3	ZOMR-03VF-A-S	3.0	7.5	1,000
4	ZOMR-04VF-A-S	4.5	9.0	1,000
5	ZOMR-05VF-A-S	6.0	10.5	1,000

Material and Surface finish, etc.

PBT (GF), natural

Note: For flame retardant grade of resin material used, please refer to the "List of Registered Overseas Standards" on our website (listed in the "Technical Documents" column on the Product Information page).

## Model number allocation

### Socket contact

**S ZND - 002 T - P 0.5**

Supply form: Strip form

Series name

Applicable wire range: AWG #28 to AWG #24

Surface finish: Tin-plated

Material: Copper alloy

Applicable contact size

### Pin contact

**S ZND M - 002 T - P 0.5**

Supply form: Strip form

Series name

Type: Pin contact

Applicable wire range: AWG #28 to AWG #24

Surface finish: Tin-plated

Material: Copper alloy

Contact size

### Plug housing

**ZOM P - 02 V - A - S**

Series name

Type: Plug

No. of circuits

Sub model number

Keying pattern: Keying pattern A

Color: Natural

### Receptacle housing

**ZOM R - 02 V F - A - S**

Series name

Type: Receptacle

No. of circuits

Sub model number

Panel lock : No

Keying pattern: Keying pattern A

Color: Natural