

# **JST** *France*

LED RANGE



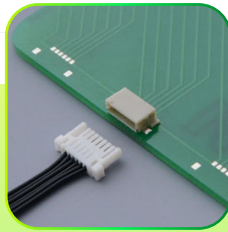
# JST LED RANGE

ALLYING A LOW DIMENSION & A POWER GOING UNTIL 1 800W

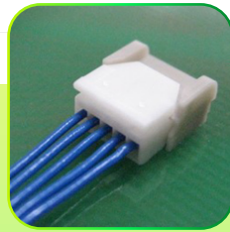
THIS INNOVATIVE CONNECTIONG LIGHTING RANGE IS PROPOSED IN WIRE TO BOARD & BOARD TO BOARD CONNECTIONS



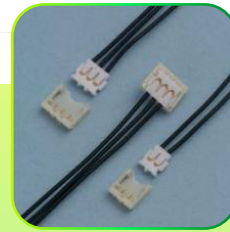
**SH**  
WTB



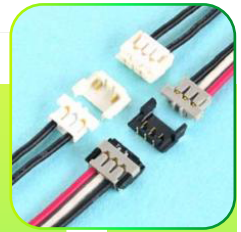
**SHJ**  
WTB



**SFG**  
WTB



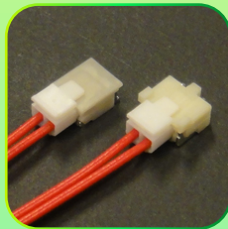
**ACH**  
WTB



**ADH**  
WTB



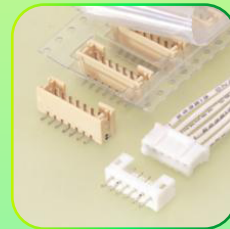
**LEA**  
WTB



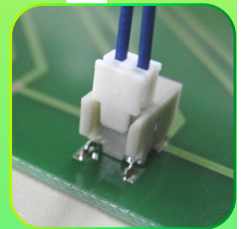
**SFK**  
WTB



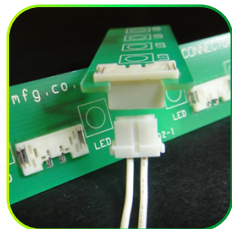
**JWPF**  
WTB



**PH**  
WTB



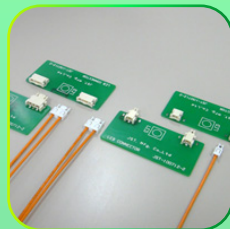
**SFV**  
WTB



**LEX**  
WTB



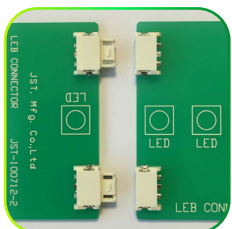
**JWPS**  
WTB



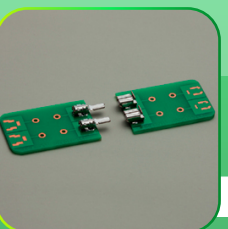
**LEB**  
WTB



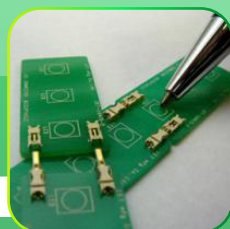
**SIN**  
WTB



**LEB**  
BTB



**LEK**  
BTB



**LEL**  
BTB

# JST WTB LED SERIES

## SH CONNECTOR

- Pitch: 1.0 mm
- N° of circuits: 3
- Type: Compact, Crimp, Disconnectable
- Current Rating: 1.0A
- Voltage Rating: 50V
- Insulation resistance: 100M $\Omega$  min
- Withstanding voltage: 500V AC / min



Compact, low profile design. Although this shrouded header has locking features for its mating receptacle, there are no holes in the header shroud that would adversely effect vacuum gripping equipment.

**HAND TOOL:** WC-SH2832

**AWG# :** #32-28

## SFG CONNECTOR

- Pitch: 4.0 mm
- N° of circuits: 4
- Type: Waterproof, Disconnectable
- Current Rating: 4, 5 & 6.0A
- Voltage Rating: 300V
- Insulation resistance: -
- Waterproof grade: 7 of JIS C 0920



This JWPS connector can be used for the place of which especially waterproof is required.

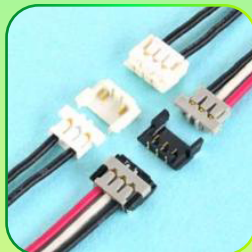
This is the wire-to-board connector that is grade 7 ingress protection of JIS C 0920 (IPX7 of IEC 60529).

**HAND TOOL:** Consult us

**AWG# :** #28

## ADH CONNECTOR

- Pitch: 1.3 mm
- N° of circuits: 2 & 3
- Type: Compact, Crimp, Disconnectable
- Current Rating: 3.0A
- Voltage Rating: 30V
- Insulation resistance: 100M $\Omega$  min
- Withstanding voltage: 500V AC / min



This ADH connector is compact and low profile type connector. It has a height of 1.9mm and a width of 4.3mm.

Pitch of 1.3 wire-to-board connector.

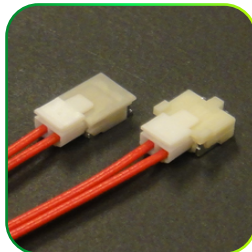
Disconnectable, Crimp & Compact connector.

**HAND TOOL:** YRS-1690

**AWG# :** #28-26

## SFK CONNECTOR

- Pitch: 1.8 mm
- N° of circuits: 2
- Type: Crimp, Secure Locking Device
- Current Rating: 4.0A
- Voltage Rating: 350V
- Insulation resistance: 100M $\Omega$  min
- Withstanding voltage: 500V AC / min



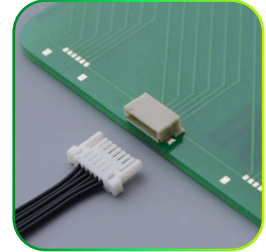
This SFK connector is a WTB connector for power supply and PCB 1 withstands high voltage. Used for power supply of LED backlight in Liquid Crystal Display Television set.

**HAND TOOL:** WC-SFH1 / WC-SFH2

**AWG# :** #30-22

## SHJ CONNECTOR

- Pitch: 1.0 mm
- N° of circuits: 6
- Type: For LCD backlight lamps
- Current Rating: 0.3A
- Voltage Rating: 50V
- Insulation resistance: 100M $\Omega$  min
- Withstanding voltage: 500V AC / min



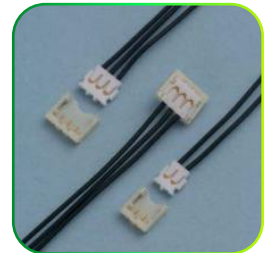
This is low profile connector suitable for the backlight connection of the LED liquid crystal display. It has the secure locking structure to prevent to come off the housing when handling the wire.

**HAND TOOL:** Consult us

**AWG# :** #32-28

## ACH CONNECTOR

- Pitch: 1.2 mm
- N° of circuits: 1 to 5
- Type: Disconnectable, Compact
- Current Rating: 2.0A(1-3) & 1.5A(4-5)
- Voltage Rating: 50V
- Insulation resistance: 100M $\Omega$  min
- Withstanding voltage: 500V AC / min



This connector is compact and low profile type, it has a height of 1.4mm and a width of 4.3mm.

Pitch of 1.2mm, wire-to-board connector.

Disconnectable & Compact connector.

**HAND TOOL:** WC-ACH2830

**AWG# :** #30-28

## LEA CONNECTOR

- Pitch: 1.5 mm
- N° of circuits: 2
- Type: Crimp, Compact, Disconnectable
- Current Rating: 3.0A
- Voltage Rating: 300V
- Insulation resistance: 1000M $\Omega$  min
- Withstanding voltage: 1700V AC / min



Considering that the connector does not affect the luminescence angle of LED chip, this low profile type connector (height:3.0 mm) is designed for connection to LED lamp and realized space saving.

**HAND TOOL:** WC-SFH2

**AWG# :** #30-22

## JWPF CONNECTOR

- Pitch: 2.0 mm
- N° of circuits: 2, 3, 4, 6 & 8
- Type: Waterproof, Disconnectable
- Current Rating: 3.0A
- Voltage Rating: 100V
- Insulation resistance: 1000M $\Omega$  min
- Withstanding voltage: 1000V AC / min



This is JWPF connector can be used for the place of which especially waterproof is required. This is the wire-to-board connector that is grade 7 ingress protection of JIS C 0920.

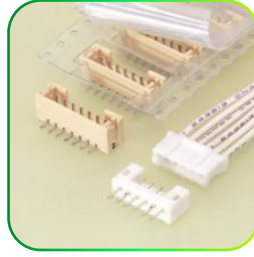
**HAND TOOL:** WC-JWPF

**AWG# :** #26-22

# JST WTB LED SERIES

## PH CONNECTOR

- Pitch: **2.0 mm**
- N° of circuits: **2 to 16**
- Type: **Thin, Crimp, Disconnectable**
- Current Rating: **2.0A**
- Voltage Rating: **100V**
- Insulation resistance: **1000M $\Omega$  min**
- Withstanding voltage: **800V AC / min**



It is designed to meet the demand for the high-density connection of internal wires to PC boards.

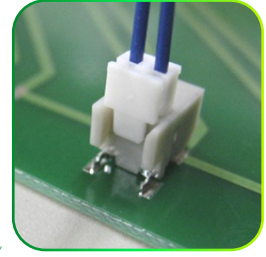
It is compact, highly reliable and low in cost.

**HAND TOOL:** PCR-01B

**AWG# :** #32-24

## SFV CONNECTOR

- Pitch: **2.0 mm**
- N° of circuits: **2**
- Type: **Crimp, Secure Locking Device**
- Current Rating: **1.0A**
- Voltage Rating: **300V**
- Insulation resistance: **1000M $\Omega$  min**
- Withstanding voltage: **1700V AC / min**



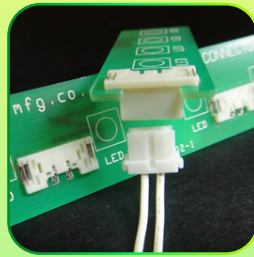
This SFV connector is a wire-to-board connector for connecting power supply and PCB and withstands high voltage. It is used for power supply of LED backlight in Liquid Crystal Display Television set.

**HAND TOOL:** WC-GH2630

**AWG# :** #30-28

## LEX CONNECTOR

- Pitch: **2.5 mm**
- N° of circuits: **2 & 4**
- Type: **Crimp, Secure locking device**
- Current Rating: **3.0A**
- Voltage Rating: **300V**
- Insulation resistance: **1000M $\Omega$  min**
- Withstanding voltage: **800V AC / min**



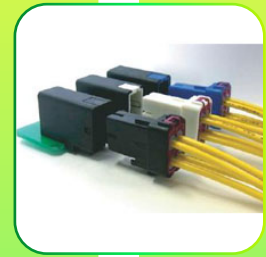
With the assumption that the load may be applied to the soldering part when mating the connector, the strength of soldering part after mounting the connector on PCB has been largely improved.

**HAND TOOL:** WC-SFH1 / WC-SFH2

**AWG# :** #30-22

## JWPS CONNECTOR

- Pitch: **4.0 mm**
- N° of circuits: **4**
- Type: **Waterproof, Disconnectable**
- Current Rating: **4, 5 & 6.0A**
- Voltage Rating: **300V**
- Insulation resistance: **-**
- Waterproof grade: **7 of JIS C 0920**



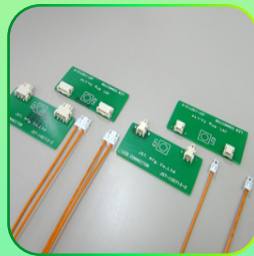
This JWPS connector can be used for the place of which especially waterproof is required. This is the wire-to-board connector that is grade 7 ingress protection of JIS C 0920 (IPX7 of IEC 60529).

**HAND TOOL:** WC-JWPS

**AWG# :** #22-18

## LEB CONNECTOR

- Pitch: **4.0 mm**
- N° of circuits: **1 & 2**
- Type: **Crimp, Disconnectable**
- Current Rating: **3.0A**
- Voltage Rating: **300V**
- Insulation resistance: **1000M $\Omega$  min**
- Withstanding voltage: **1700V AC / min**



LEB is designed as low profile type connector (height: 2.7mm) for LED lighting, & achieves the space saving. The horizontal connection between PCBs enables & the mechanism of absorbing the PCB misalignment has been installed considering the parallel use for the connector.

**HAND TOOL:** WC-LEB001

**AWG# :** #26-22

## SIN CONNECTOR

- Pitch: **-**
- N° of circuits: **-**
- Type: **Crimp, Board-in, Single circuit**
- Current Rating: **Depends of Wires**
- Voltage Rating: **-**
- Insulation resistance: **-**
- Withstanding voltage: **-**



Various types of terminals are available for wide range of wires, from AWG #30 to 10 / Top entry type.

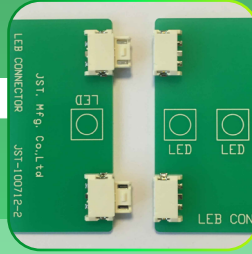
**HAND TOOL:** Consult us

**AWG# :** #30-10

# JST BTB LED SERIES

## LEB CONNECTOR

- Pitch: 4.0 mm
- N° of circuits: 1 & 2
- Type: Crimp, Disconnectable, LED
- Current Rating: 3.0A
- Voltage Rating: 300V
- Insulation resistance: 1000M $\Omega$  min
- Withstanding voltage: 1700V AC / min



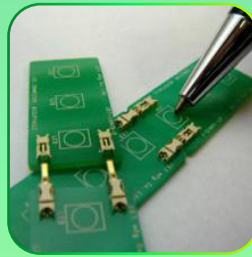
Designed as low profile type (height: 2.7mm) & achieves the space saving. The horizontal connection between PCBs enables & the mechanism of absorbing the PCB misalignment has been installed considering the parallel use for the connector.

**HAND TOOL:** -

**AWG#:** -

## LEK CONNECTOR

- Pitch: -
- N° of circuits: 5 to 19
- Type: LED
- Current Rating: 1.6A
- Voltage Rating: 100V
- Insulation resistance: -
- Withstanding voltage: -



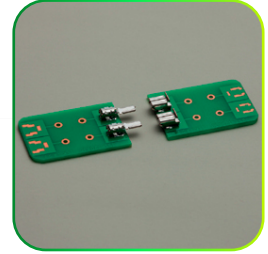
Designed as low profile type for LED lighting, & achieves the space saving. The horizontal connection between PCBs enables & the mechanism of absorbing the PCB misalignment has been installed considering the parallel use for the connector.

**HAND TOOL:** -

**AWG#:** -

## LEK CONNECTOR

- Pitch: -
- N° of circuits: -
- Type: With secure locking device, LED
- Current Rating: 3.0A
- Voltage Rating: -
- Insulation resistance: -
- Withstanding voltage: -



This LEK connector is board-to-board connector that does not use the housing and has a positive lock. This enables to absorb misalignment when mating connector. Absorbing PC board misalignment type / PC board horizontal mounting type.

**HAND TOOL:** -

**AWG#:** -

# **JST** *France*

BP 60 023  
RUE DE LA VIOLETTE  
51301 VITRY-LE-FRANCOIS CEDEX  
FRANCE

MARKETING@JST.FR  
WWW.JST.FR

