



JST *France*

THE QUALITY CONNECTION

JST FRANCE HAND TOOLS

PRESENTATION

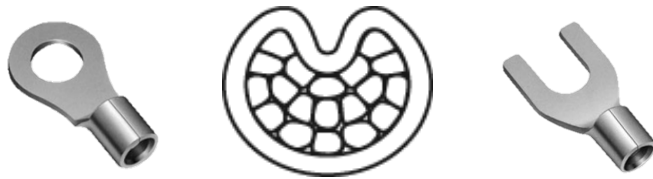




PCK

PCK-02A

For non insulated terminals



TECHNICAL DATAS:

Length: 204 mm / 0.3"

Width: 22 mm / 0.87"

Height: 76 mm / 2.99"

Weight: 50 gr / 1.1 lb

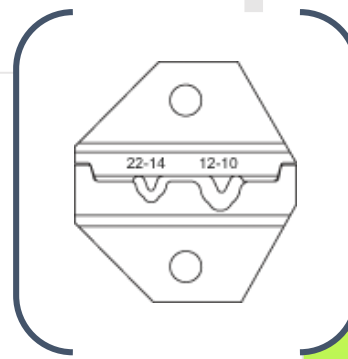
Wire size: 0.33 to 2.08 mm² / AWG# 22 to 14

Crimp dimensions mm / mm²: 0.35-2.5 mm² / 4-6 mm²

Crimp dimensions inch / AWG: AWG# 22-14 / AWG# 12-10

Connector: for uninsulated copper tube & copper sheet connectors

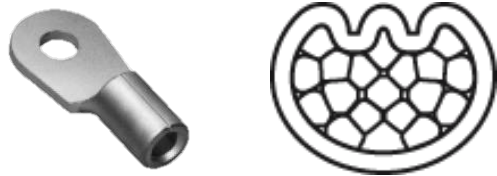
Life cycles: 50 000



- Crimping tool for non insulated connectors, 0.35-6.0 mm²/AWG 22-10, Indent-Crimp.
- High strength, through hardened alloy steel construction
- Unique mechanism significantly reduces hand force requirement over competing crimping tools
- Versatile and easy to customize for right hand or left hand users.
- Non-slip pad holds tool in place when leveraging on a work surface
- Full cycle crimp mechanism to ensure consistent, reliable crimp
- Ratchet release mechanism to clear mis-crimps and obstructions
- Precision eccentric adjustment for consistent performance and ability to calibrate
- Hole in handle allows attachment of safety strap
- Each tool has a unique serial number for traceability

PCK-02I

For DIN Terminals & Splices



TECHNICAL DATAS:

Length: 256 mm / 10.08"

Width: 22 mm / 0.87"

Height: 80 mm / 3.15"

Weight: 550 gr / 1.21 lb

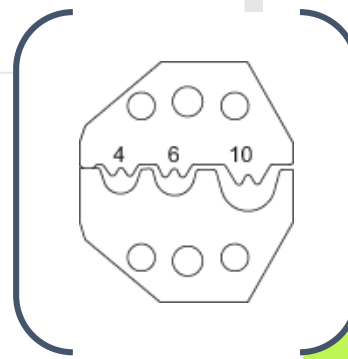
Wire size: 4 to 10mm² / AWG# 12 to 8

Crimp dimensions mm / mm²: 4 / 6 / 10 mm²

Crimp dimensions inch / AWG: AWG# 12 / 10 / 8

Connector: for non insulated DIN46234 non insulated terminals & splices

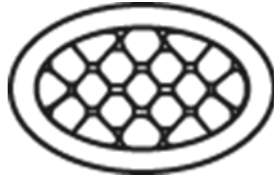
Description: Life cycles: 50 000



- Crimping tool for non insulated connectors, 4-10 mm²/AWG 12-8, W-Crimp.
- High strength, through hardened alloy steel construction
- Unique mechanism significantly reduces hand force requirement over competing crimping tools
- Versatile and easy to customize for right hand or left hand users.
- Non-slip pad holds tool in place when leveraging on a work surface
- Full cycle crimp mechanism to ensure consistent, reliable crimp
- Ratchet release mechanism to clear mis-crimps and obstructions
- Precision eccentric adjustment for consistent performance and ability to calibrate
- Hole in handle allows attachment of safety strap
Each tool has a unique serial number for traceability

PCK-05E

For insulated terminals:
red, blue & yellow



TECHNICAL DATAS:

Length: 256 mm / 10.08"

Width: 22 mm / 0.87"

Height: 80 mm / 3.15"

Weight: 559 gr / 1.23 lb

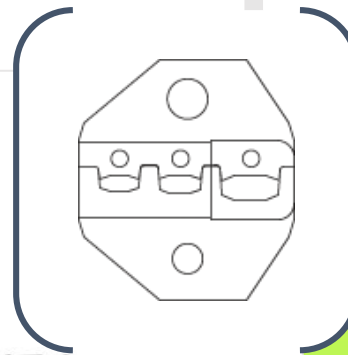
Wire size: 0.75-6 mm² / AWG# 22-10

Crimp dimensions mm / mm²: 0.75-1.5 / 1.5-2.5 / 4-6
mm²

Crimp dimensions inch / AWG: #22-16 / #16-14 / #12-10

Connector: for pre insulated red, blue & yellow

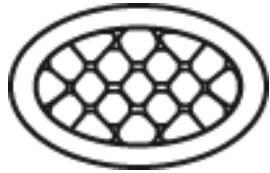
Life cycles: 50 000



- Crimping tool for insulated connectors, 0.75 - 6.0 mm²/AWG 22-10 (red, blue, yellow), Oval-Crimp symmetric. Short and long handle available.
- High strength, through hardened alloy steel construction
- Unique mechanism significantly reduces hand force requirement over competing crimping tools
- Versatile and easy to customize for right hand or left hand users.
- Non-slip pad holds tool in place when leveraging on a work surface
- Full cycle crimp mechanism to ensure consistent, reliable crimp
- Ratchet release mechanism to clear mis-crimps and obstructions
- Precision eccentric adjustment for consistent performance and ability to calibrate
- Hole in handle allows attachment of safety strap
- Each tool has a unique serial number for traceability
- Vinyl Insulation exists in Nylon & in reinforced Insulation conformed to Reach Compliance

PCK-05G

For insulated terminals



TECHNICAL DATAS:

Length: 204 mm / 8.03"

Width: 22 mm / 0.87"

Height: 76 mm / 2.99"

Weight: 500 gr / 1.1 lb

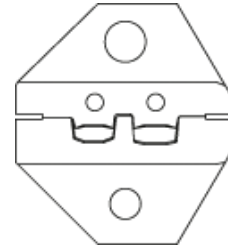
Wire size: 0.14 – 1.0 mm² / AWG# 26-16

Crimp dimensions mm / mm²: 0.14 – 1.0 mm²

Crimp dimensions inch / AWG: # 26-16

Connector: for pre insulated red, & blue connectors

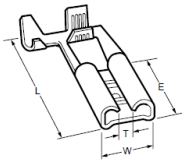
Life cycles: 50 000



- Crimping tool for insulated connectors, 0.14 – 1.0 mm²/AWG 26-16 (red, blue), Oval-Crimp
- High strength, through hardened alloy steel construction
- Unique mechanism significantly reduces hand force requirement over competing crimping tools
- Versatile and easy to customize for right hand or left hand users.
- Non-slip pad holds tool in place when leveraging on a work surface
- Full cycle crimp mechanism to ensure consistent, reliable crimp
- Ratchet release mechanism to clear miscrimps and obstructions
- Precision eccentric adjustment for consistent performance and ability to calibrate
- Hole in handle allows attachment of safety strap
Each tool has a unique serial number for traceability

PCK-06H

For Tab on flag terminals



TECHNICAL DATAS:

Length: 204 mm / 8.03"

Width: 22 mm / 0.87"

Height: 76 mm / 2.99"

Weight: 560 gr / 1.23 lb

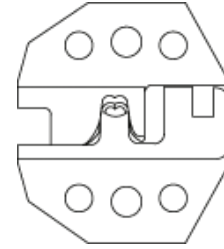
Wire size: 1-2.5 mm² / AWG# 18-14

Crimp dimensions mm / mm²: 1.0-2.5 mm²

Crimp dimensions inch / AWG: #18-14

Connector: for SF0-2.5-250N & SF0-2.5T-250N terminals

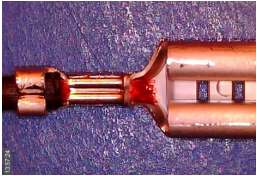
Life cycles: 50 000



- Crimping tool for : **SF0-2.5-250N / SF0-2.5T-250N**
- High strength, through hardened alloy steel construction
- Unique mechanism significantly reduces hand force requirement over competing crimping tools
- Versatile and easy to customize for right hand or left hand users.
- Non-slip pad holds tool in place when leveraging on a work surface
- Full cycle crimp mechanism to ensure consistent, reliable crimp
- Ratchet release mechanism to clear mis-crimps and obstructions
- Precision eccentric adjustment for consistent performance and ability to calibrate
- Hole in handle allows attachment of safety strap
Each tool has a unique serial number for traceability

PCK-07E

For Chain Terminals / Splices



TECHNICAL DATAS:

Length: 256 mm / 10.08"

Width: 22 mm / 0.87"

Height: 80 mm / 3.15"

Weight: 560 gr / 1.23 lb

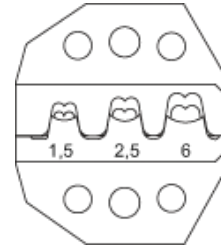
Wire size: 0.5 to 6 mm² / AWG# 22 to 10

Crimp dimensions mm / mm²: 0.5-1.5 / 1.5-2.5 / 4-6 mm²

Crimp dimensions inch / AWG: # 22-16 / 16-14 / 12-10

Connector: for ring tongue & tab on terminals

Life cycles: 50 000



- Crimping tool for : **SRB-2.5-() / SRT-2.5-() / STO-1.0-110N / STO-1.0-187N / STO-1.0-250N / STO-2.5-250N**
- High strength, through hardened alloy steel construction
- Unique mechanism significantly reduces hand force requirement over competing crimping tools
- Versatile and easy to customize for right hand or left hand users.
- Non-slip pad holds tool in place when leveraging on a work surface
- Full cycle crimp mechanism to ensure consistent, reliable crimp
- Ratchet release mechanism to clear mis-crimps and obstructions
- Precision eccentric adjustment for consistent performance and ability to calibrate
- Hole in handle allows attachment of safety strap
Each tool has a unique serial number for traceability

The image features a PCR thermal cycler block, a common laboratory instrument used for DNA amplification. The block is shown in a perspective view, highlighting its black plastic housing and the array of metal pins. A semi-transparent white graphic overlay is positioned in the center, containing the text 'PCR' in a bold, black, serif font. The background is a soft, out-of-focus white surface, and a blurred white object is visible in the upper right corner.

PCR

PCR-01B

For SPH-002-P0.5S terminal



TECHNICAL DATAS:

Length: 190 mm / 7.48"

Width: 21 mm / 0.83"

Height: 74 mm / 2.91"

Weight: 317 gr / 0.7 lb (hand tool + die+ locator)

Wire size: 0.08 to 0.22 mm² / AWG# 28 to 24

Crimp dimensions mm / mm²: 0.08-0.22 mm²

Crimp dimensions inch / AWG: AWG# 28-24

Connector: for **SPH-002-P0.5S** : contact from JST
PH serie

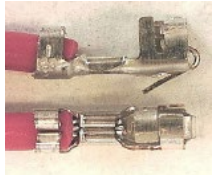
Life cycles: 50 000



- Equipped with a locator which optimizes contact installation & wire insertion. It simply achieves the crimp cycle.
- PCR frame length provides optimum low handle force for miniature connectors
- Unique "snap on" locator design for full visibility of connector and wire insertion
- Parallel action for precision and consistent crimp results
- Full cycle crimp mechanism to ensure consistent, reliable crimp
- Ratchet release mechanism to clear mis-crimps and obstructions
- Precision eccentric adjustment for consistent performance and ability to calibrate
- Tool-less die closure adjustment for maintenance and calibration
- Small size makes it easy to use in confined work areas
- Hole in handle allows attachment of safety strap
Each tool has a unique serial number for traceability

PCR-02A

For SXH-001T-P0.6 terminal



TECHNICAL DATAS:

Length: 190 mm / 7.48"

Width: 21 mm / 0.83"

Height: 74 mm / 2.91"

Weight: 317 gr / 0.7 lb (hand tool + die+ locator)

Wire size: 0.13 to 0.33 mm² / AWG# 26 to 22

Crimp dimensions mm / mm²: 0.13 to 0.33 mm²

Crimp dimensions inch / AWG: # 26 to 22

Connector: for **SXH-001T-P0.6** : contact from JST
XH serie

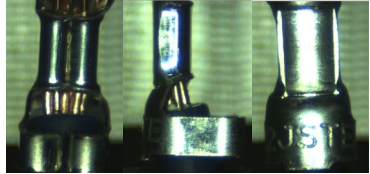
Life cycles: 50 000



- Equipped with a locator which optimizes contact installation & wire insertion. It simply achieves the crimp cycle.
- PCR frame length provides optimum low handle force for miniature connectors
- Unique "snap on" locator design for full visibility of connector and wire insertion
- Parallel action for precision and consistent crimp results
- Full cycle crimp mechanism to ensure consistent, reliable crimp
- Ratchet release mechanism to clear mis-crimps and obstructions
- Precision eccentric adjustment for consistent performance and ability to calibrate
- Tool-less die closure adjustment for maintenance and calibration
- Small size makes it easy to use in confined work areas
- Hole in handle allows attachment of safety strap
Each tool has a unique serial number for traceability

PCR-03D

For SVH-21T-P1.1 terminal



TECHNICAL DATAS:

Length: 190 mm / 7.48"

Width: 21 mm / 0.83"

Height: 74 mm / 2.91"

Weight: 317 gr / 0.7 lb (hand tool + die+ locator)

Wire size: 0.33 to 0.83 mm² / AWG# 22 to 18

Crimp dimensions mm / mm²: 0.33 to 0.83 mm²

Crimp dimensions inch / AWG: # 22 to 18

Connector: for **SVH-21T-P1.1** : contact from JST
VH serie

Life cycles: 50 000



- Equipped with a locator which optimizes contact installation & wire insertion. It simply achieves the crimp cycle.
- PCR frame length provides optimum low handle force for miniature connectors
- Unique "snap on" locator design for full visibility of connector and wire insertion
- Parallel action for precision and consistent crimp results
- Full cycle crimp mechanism to ensure consistent, reliable crimp
- Ratchet release mechanism to clear mis-crimps and obstructions
- Precision eccentric adjustment for consistent performance and ability to calibrate
- Tool-less die closure adjustment for maintenance and calibration
- Small size makes it easy to use in confined work areas
- Hole in handle allows attachment of safety strap
Each tool has a unique serial number for traceability

PCR-04AB

For PHD, PA & PAL series



TECHNICAL DATAS:

Length: 190 mm / 7.48"

Width: 21 mm / 0.83"

Height: 74 mm / 2.91"

Weight: 317 gr / 0.7 lb (hand tool + die+ locator)

Wire size: 0.08 to 0.33 mm² / AWG# 28 to 22

Crimp dimensions mm / mm²: 0.08 to 0.33 mm²

Crimp dimensions inch / AWG: # 28 to 22

Connector: for **SPHD-001T-P0.5** / **SPHD-002T-P0.5** / **SPA-001T-P0.5** / **SPAL-001T-P0.5** / **SPAL-002T-P0.5**

: terminals from JST **PHD, PA & PAL** series

Life cycles: 50 000



- Equipped with two locators which optimize contact installation & wire insertion. It simply achieves the crimp cycle.

- Same characteristics as the other PCR

- **One hand tool for 5 different terminals**

- **PHD:**

SPHD-001T-P0.5 / Wire section: 0.13 -0.33mm² / AWG# 26-22

SPHD-002T-P0.5 / Wire section: 0.08 - 0.21mm² / AWG# 28-24

- **PA:**

SPA-001T-P0.5 / Wire section: 0.13 -0.33mm² / AWG# 26-22

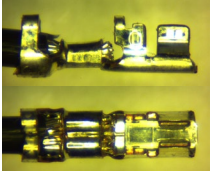
- **PAL:**

SPAL-001T-P0.5 / Wire section: 0.13-0.33 mm² / AWG# 26-22

SPAL-002T-P0.5 / Wire section: 0.08-0.21 mm² / AWG# 28-24

PCR-LBTA

For SLBTAD-01T-M0.5 terminal



TECHNICAL DATAS:

Length: 190 mm / 7.48"

Width: 21 mm / 0.83"

Height: 74 mm / 2.91"

Weight: 317 gr / 0.7 lb (hand tool + die+ locator)

Wire size: 0.22 to 0.5 mm² / AWG# 24 to 20

Crimp dimensions mm / mm²: 0.22 to 0.5 mm²

Crimp dimensions inch / AWG: # 24 to 20

Connector: for **SLBTAD-01T-M0.5** : contact from JST **LBT A type** serie

Life cycles: 50 000



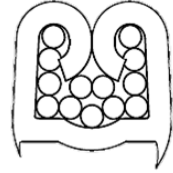
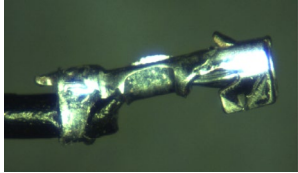
- Equipped with a locator which optimizes contact installation & wire insertion. It simply achieves the crimp cycle.
- PCR frame length provides optimum low handle force for miniature connectors
- Unique "snap on" locator design for full visibility of connector and wire insertion
- Parallel action for precision and consistent crimp results
- Full cycle crimp mechanism to ensure consistent, reliable crimp
- Ratchet release mechanism to clear mis-crimps and obstructions
- Precision eccentric adjustment for consistent performance and ability to calibrate
- Tool-less die closure adjustment for maintenance and calibration
- Small size makes it easy to use in confined work areas
- Hole in handle allows attachment of safety strap
Each tool has a unique serial number for traceability



PCC

PCC-05C

For SSUH-003T-P0.15 terminal



TECHNICAL DATAS:

Length: 190 mm / 7.48"

Width: 21 mm / 0.83"

Height: 74 mm / 2.91"

Weight: 317 gr / 0.7 lb (hand tool + die+ locator)

Wire size: 0.08 to 0.22 mm² / AWG# 28 to 24

Crimp dimensions mm / mm²: 0.08-0.22 mm²


Crimp dimensions inch / AWG: AWG# 28-24

Connector: for **SSUH-003T-P0.15** : contact from JST **SUH** serie

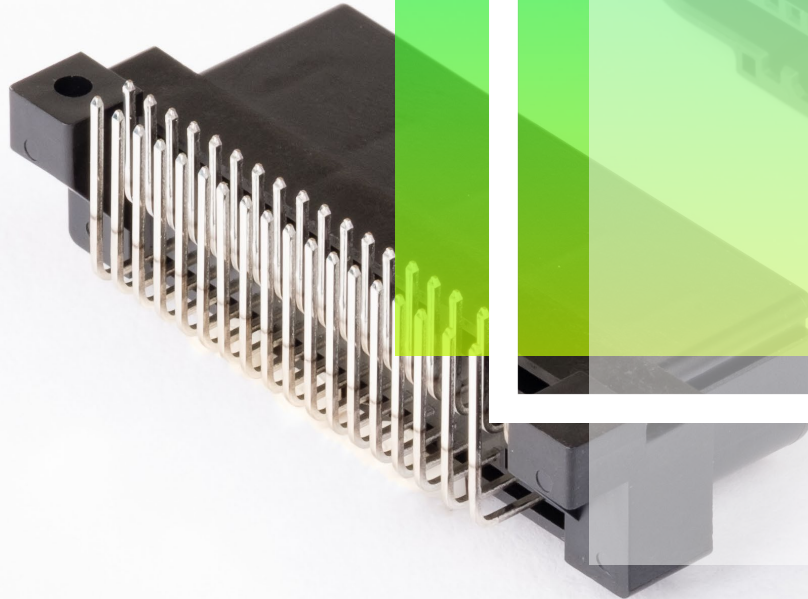
Life cycles: 50 000



- Equipped with a locator which optimizes contact installation & wire insertion. It simply achieves the crimp cycle.
- PCR frame length provides optimum low handle force for miniature connectors
- Unique "snap on" locator design for full visibility of connector and wire insertion
- Parallel action for precision and consistent crimp results
- Full cycle crimp mechanism to ensure consistent, reliable crimp
- Ratchet release mechanism to clear mis-crimps and obstructions
- Precision eccentric adjustment for consistent performance and ability to calibrate
- Tool-less die closure adjustment for maintenance and calibration
- Small size makes it easy to use in confined work areas
- Hole in handle allows attachment of safety strap
Each tool has a unique serial number for traceability



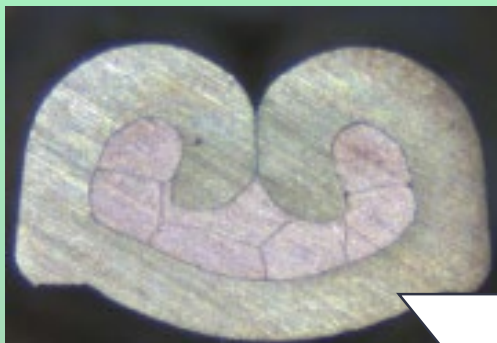
**INNOVATION
TOOLING
RANGE**



FOR YOUR WTW & WTB CONNECTIONS

Because bad crimping has an electrical impact and bad consequences on your connection, JST France decided to focus on offering his knowledge by providing adapted crimp tools to his whole range and customer's needs.

Crimping is not only binding one wire to one terminal & a bad one can also cause severe defects.

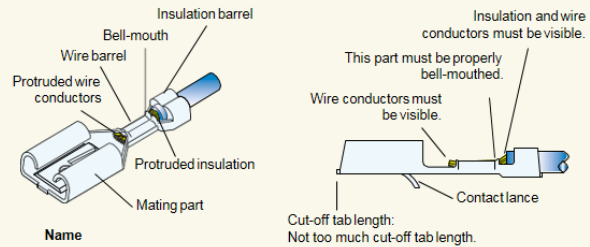


Good
Ones

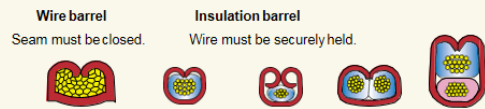


CRIMPING

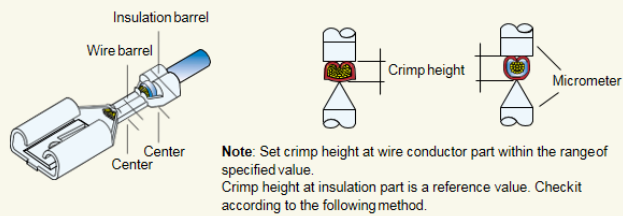
Correct crimping



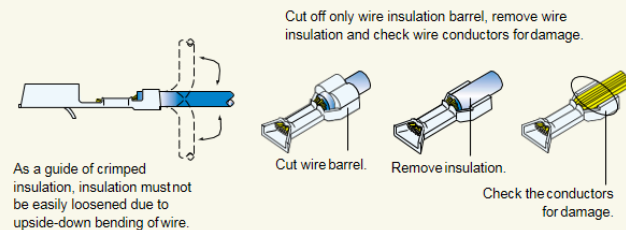
Cross section at crimped part



Crimp height measurement

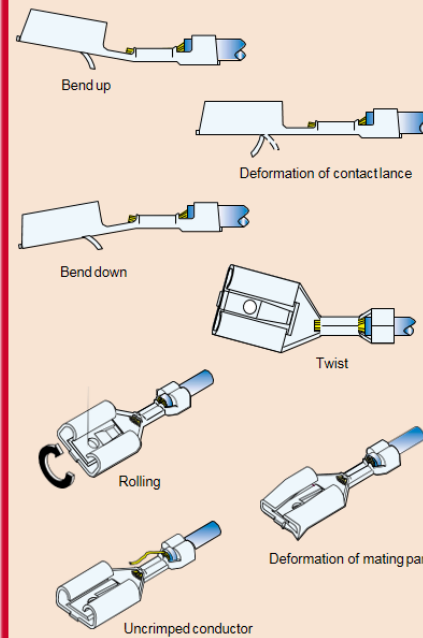


Check of insulation part

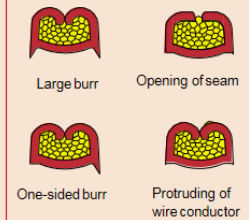


Incorrect crimping

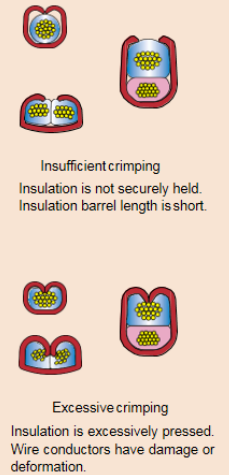
Appearance defect



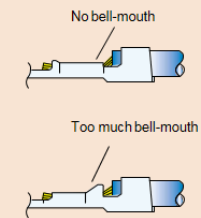
Cross section at crimped part of wire barrel



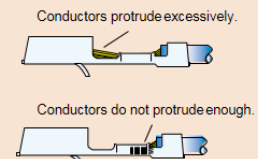
Cross section at crimped part of insulation barrel



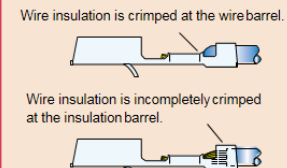
Bell-mouth



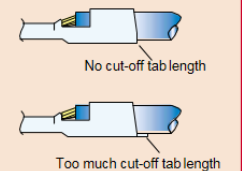
Wire conductors protruding length



Wire insulation protruding length



Cut-off tab length





THANK YOU

www.jst.fr